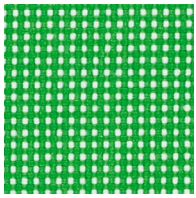


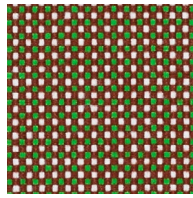
Pro 3

**kvadrat**

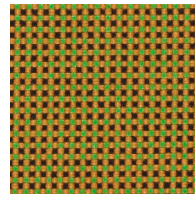
Pro 3



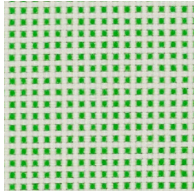
924



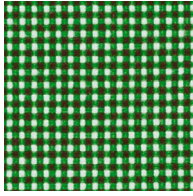
944



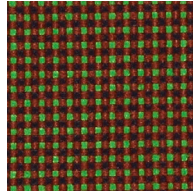
454



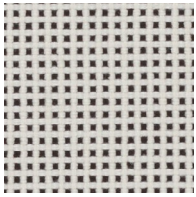
914



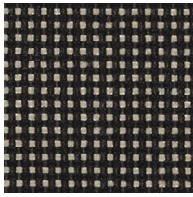
934



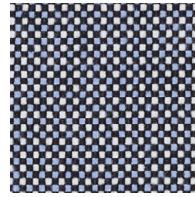
964



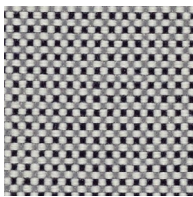
124



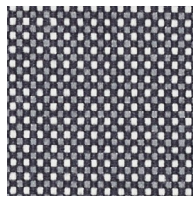
244



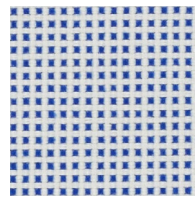
734



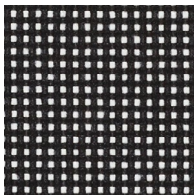
114



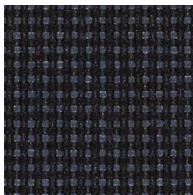
134



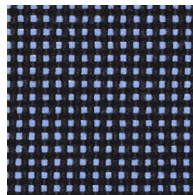
724



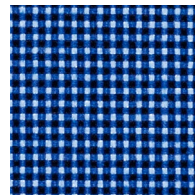
194



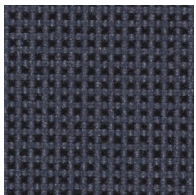
174



774



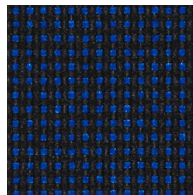
744



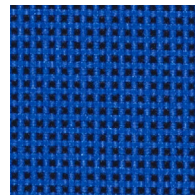
184



144

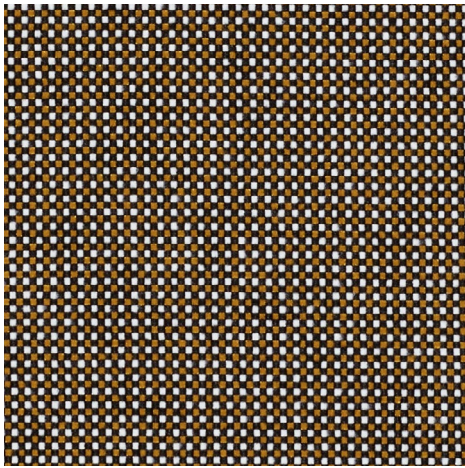


794

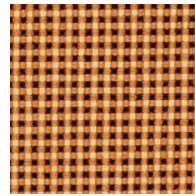


754

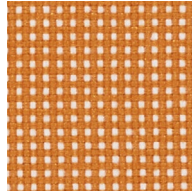
Pro 3



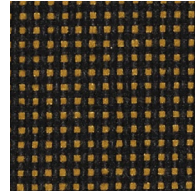
254



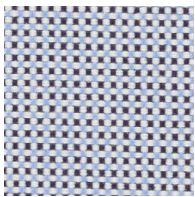
434



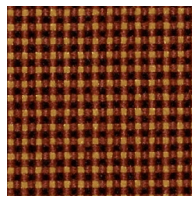
424



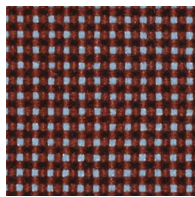
494



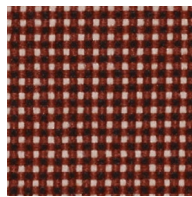
714



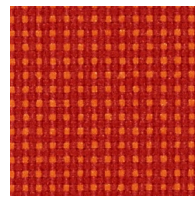
464



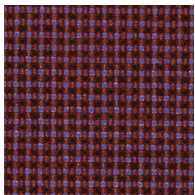
274



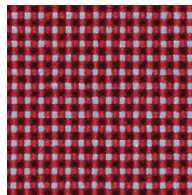
264



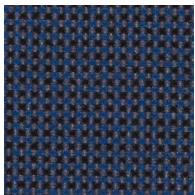
544



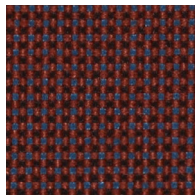
664



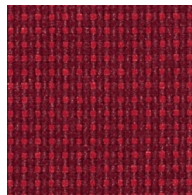
644



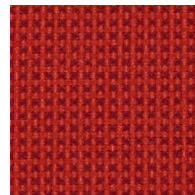
764



294



634



624



**Pro 3**

Designed by Finn Sködt

**DK**

**Anvendelse** Kontorer, hoteller, institutioner, private indretninger. Stor slidstyrke.  
**Beskrivelse** 100% Trevira CS. Bredde ca. 150 cm. Vægt ca. 510 g/lbm. Garnfarvet. Nuanceforskel kan forekomme.

**Ægkant ↔**

**Slidstyrke:** Ca. 80.000 slidbevægelser efter Martindale metoden EN ISO 12947. **Lysægthed** (ISO) 6-7. **Pilling** (EN ISO) 4. **Gnidægthed** (ISO) tør 5, våd 4-5. **Lydabsorption** (EN ISO 354) 0.60/Class C (fladt), 0.80/Class B (foldet). **Airflow** 974 Pa s/m. **Flammesikring:** AS/NZS 1530.3. AS/NZS 3837 Class 1. ASTM E84 Class A hæftet. BS 5852 Crib 5. DIN 4102 B1. EN 1021-1/2. EN 13501 B, s1, d0. FAR 25.853. IMO FTP Code 2010:Part 7. IMO FTP Code 2010:Part 8. NF D 60 013. NF P 92 507 M1. NFPA 701. SN 198 898 5.2. UNI 9175 11M. UNI 9177 Classe 1. US Cal. Bull. 117-2013. ÖNORM B1 / Q1. (Kopi af testrapport kan rekvireres).

**Vedligeholdelse** Se ISO symboler. Krypning ca. 2% ved vask 60°C. Desinfektion, se kvadrat.dk.

**UK/US**

**Application** Offices, hotels, institutions, domestic use. Great durability. In accordance with California AB2998 or similar regulation in other states of North America, this product should not be used for residential upholstery in USA.

**Description** 100% Trevira CS. Width app. 59 inches (150 cm). Weight app. 510 g/lin.m, 16.5 oz/ly. Yarn dyed. Colour differences may occur.

**Selvedge/Direction ↔**

**Abrasion:** App. 80,000 rubs acc. to the Martindale method EN ISO 12947\*. **Lightfastness** (ISO) 6-7. **Pilling** (EN ISO) 4. **Fastness to rubbing** (ISO) dry 5, wet 4-5. **Sound absorption** (EN ISO 354) 0.60/Class C (flat), 0.80/Class B (waved). **Airflow** 974 Pa s/m. **Flame resistance:** AS/NZS 1530.3. AS/NZS 3837 Class 1. ASTM E84 Class A unadhered. BS 5852 Crib 5. DIN 4102 B1. EN 1021-1/2. EN 13501 B, s1, d0. FAR 25.853. IMO FTP Code 2010:Part 7. IMO FTP Code 2010:Part 8. NF D 60 013. NF P 92 507 M1. NFPA 701. SN 198 898 5.2. UNI 9175 11M. UNI 9177 Classe 1. US Cal. Bull. 117-2013. ÖNORM B1 / Q1. (Copy of test report available).

**Care** Please see the ISO symbols. Shrinkage app. 2% when washed at 60°C. Disinfection, see kvadrat.dk.

**DE**

**Anwendungsbereich** Büros, Hotels, Objectbereich, privaten Wohnbereich. Hohe Strapazierfähigkeit.  
**Beschreibung** 100% Trevira CS. Breite ca. 150 cm. Gewicht ca. 510 g/lfd.m. Garngefärbt. Farbunterschiede können vorkommen.

**Webkante ↔**

**Scheuerfestigkeit:** Ca. 80.000 Scheuerhübe gemäss der Martindale Methode EN ISO 12947. **Lichtechtheit** (ISO) 6-7. **Pilling** (EN ISO) 4. **Reibechtheit** (ISO) trocken 5, nass 4-5. **Schallabsorption** (EN ISO 354) 0.60/Class C (glatt), 0.80/Class B (gefaltet). **Airflow** 974 Pa s/m. **Flammenschutz:** AS/NZS 1530.3. AS/NZS 3837 Class 1. ASTM E84 Class A unverklebt. BS 5852 Crib 5. DIN 4102 B1. EN 1021-1/2. EN 13501 B, s1, d0. FAR 25.853. IMO FTP Code 2010:Part 7. IMO FTP Code 2010:Part 8. NF D 60 013. NF P 92 507 M1. NFPA 701. SN 198 898 5.2. UNI 9175 11M. UNI 9177 Classe 1. US Cal. Bull. 117-2013. ÖNORM B1 / Q1. (Kopie von Prüfungsbericht verfügbar).  
**Pflege** Siehe ISO Pflegesymbole. Wascheinlauf ca. 2% bei 60°C. Desinfektion, siehe kvadrat.dk.

**NL**

**Toepassing** Kantoren, hotels, instellingen, de privéfeer. Uitstekende slijtvastheid.  
**Omschrijving** 100% Trevira CS. Breedte ca. 150 cm. Gewicht ca. 510 gr/str. m. Garengeverfd. Kleurverschillen kunnen optreden.

**Zelfkant ↔**

**Slijtvastheid:** Ca. 80.000 toeren Martindale EN ISO 12947. **Lichtechtheid** (ISO) 6-7. **Pilling** (EN ISO) 4. **Wrijftechtheid** (ISO) droge 5, natte 4-5. **Geluidsabsorptie** (EN ISO 354) 0.60/Class C (vlak), 0.80/Class B (geplooid). **Airflow** 974 Pa s/m. **Brandwerendheid:** AS/NZS 1530.3. AS/NZS 3837 Class 1. ASTM E84 Class A ongelijmd. BS 5852 Crib 5. DIN 4102 B1. EN 1021-1/2. EN 13501 B, s1, d0. FAR 25.853. IMO FTP Code 2010:Part 7. IMO FTP Code 2010:Part 8. NF D 60 013. NF P 92 507 M1. NFPA 701. SN 198 898 5.2. UNI 9175 11M. UNI 9177 Classe 1. US Cal. Bull. 117-2013. ÖNORM B1 / Q1. (Op aanvraag sturen wij U graag een kopie van het testrapport toe).  
**Onderhoud** Zie de ISO symbolen. Krimp ca. 2% bij 60°C. Desinfectie, kvadrat.dk.

**FR**

**Domaine d'utilisation** Tissu d'ameublement pour aménagement privé et public. Grande résistance.  
**Description** 100% Trevira CS. Largeur env. 150 cm. Poids env. 510 g/m lg. Teinture sur fil. Ecart des coloris possibles.

**Lisière ↔**

**Résistance à l'abrasion:** Env. 80.000 révolutions selon le procédé Martindale EN ISO 12947. **Résistance à la lumière** (ISO) 6-7. **Boulochage** (EN ISO) 4. **Résistance au frottement** (ISO) sec 5, mouillé 4-5. **Absorption acoustique** (EN ISO 354) 0.60/Class C (à plat), 0.80/Class B (plié). **Airflow** 974 Pa s/m. **Normes au feu:** AS/NZS 1530.3. AS/NZS 3837 Class 1. ASTM E84 Class A non collé. BS 5852 Crib 5. DIN 4102 B1. EN 1021-1/2. EN 13501 B, s1, d0. FAR 25.853. IMO FTP Code 2010:Part 7. IMO FTP Code 2010:Part 8. NF D 60 013. NF P 92 507 M1. NFPA 701. SN 198 898 5.2. UNI 9175 11M. UNI 9177 Classe 1. US Cal. Bull. 117-2013. ÖNORM B1 / Q1. (La copie du compte rendu des tests est disponible sur demande).  
**Entretien** Voir les symboles ISO. Rétrécissement: Env. 2% pour lavage à 60°C. Désinfection, voir kvadrat.dk.

**IT**

**Destinazione d'uso** Rivestimenti per imbottiti, casa e contract. Alta resistenza all'abrasione.  
**Caratteristiche** 100% Trevira CS. Altezza circa 150 cm. Peso circa 510 gr/ml. Tinto in filo. Possibili differenze per colore.

**Cimosa ↔**

**Resistenza all'abrasione:** circa 80.000 cicli/ metodo Martindale EN ISO 12947. **Resistenza alla luce** (ISO) 6-7. **Pilling** (EN ISO) 4. **Resistenza allo sfregamento** (ISO) condizione a secco 5, condizione umido 4-5. **Assorbimento acustico** (EN ISO 354) 0.60/Class C (a pannello (tesa)), 0.80/Class B (arricciata). **Airflow** 974 Pa s/m. **Ignifugazione:** AS/NZS 1530.3. AS/NZS 3837 Class 1. ASTM E84 Class A non incollato. BS 5852 Crib 5. DIN 4102 B1. EN 1021-1/2. EN 13501 B, s1, d0. FAR 25.853. IMO FTP Code 2010:Part 7. IMO FTP Code 2010:Part 8. NF D 60 013. NF P 92 507 M1. NFPA 701. SN 198 898 5.2. UNI 9175 11M. UNI 9177 Classe 1. US Cal. Bull. 117-2013. ÖNORM B1 / Q1. (Disponibile copia del test).  
**Manutenzione** Per favore seguire simboli ISO. Restringimento 2% quando lavata 60°C. Per disinfectare, vedi il sito kvadrat.dk.

**ES**

**Aplicación** Oficinas, hoteles, instituciones, uso doméstico. Gran resistencia al desgaste.  
**Descripción** 100% Trevira CS. Anchura aprox. 150 cm. Peso aprox. 510 gr/ml. Teñido en hilo. Posibles variaciones de color.

**Filo ↔**

**Resistencia al desgaste:** Aprox. 80.000 ciclos según el método Martindale EN ISO 12947. **Resistencia a la luz** (ISO) 6-7. **Relleno** (EN ISO) 4. **Solidez al tratamiento** (ISO) seco 5, mojado 4-5. **Absorción acústica** (EN ISO 354) 0.60/Class C (estor), 0.80/Class B (cortina). **Airflow** 974 Pa s/m. **Resistencia al fuego:** AS/NZS 1530.3. AS/NZS 3837 Class 1. ASTM E84 Class A sin pegar. BS 5852 Crib 5. DIN 4102 B1. EN 1021-1/2. EN 13501 B, s1, d0. FAR 25.853. IMO FTP Code 2010:Part 7. IMO FTP Code 2010:Part 8. NF D 60 013. NF P 92 507 M1. NFPA 701. SN 198 898 5.2. UNI 9175 11M. UNI 9177 Classe 1. US Cal. Bull. 117-2013. ÖNORM B1 / Q1. (Copia del informe de ensayos disponible).  
**Mantenimiento** Consulte los símbolos ISO. Encoge aprox. 2% en lavado a 60°C. Desinfección, visita kvadrat.dk.

**JP**

**用途** オフィス、ホテル、各種施設、住宅インテリア。磨耗性大。  
**詳細** 100%トレヴィーラ CS。幅：150 cm。重量：1mあたり約510 g。糸染め。色彩ニューアンスに多少の違いが生じる可能性あり。

**耳、ふち、↔****テスト:**

**磨耗:** マーチンデール法により摩擦運動約80,000回。EN ISO 12947. **色褪せ保証:** (ISO) 6-7. **ピリング** (EN ISO) 4. **摩擦保証:** (ISO) 乾燥状態5、濡れた状態4-5. **吸音率** (EN ISO 354) 0.60/Class C (パネル状)、0.80/Class B (ドレープ状). **気流:** 974 Pa s/m. **耐炎性:** AS/NZS 1530.3. AS/NZS 3837 Class 1. ASTM E84 Class A unadhered. BS 5852 Crib 5. DIN 4102 B1. EN 1021-1/2. EN 13501 B, s1, d0. FAR 25.853. IMO FTP Code 2010:Part 7. IMO FTP Code 2010:Part 8. NF D 60 013. NF P 92 507 M1. NFPA 701. SN 198 898 5.2. UNI 9175 11M. UNI 9177 Classe 1. US Cal. Bull. 117-2013. ÖNORM B1 / Q1. (テストレポートのコピー入手可能。)

**手入れ**

ISOシンボル参照。60°Cで洗浄した際の縮み約2%。消毒について?kvadrat.dkまで参照ください。

**CN**

**适用范围** 办公室、宾馆酒店、公共设施、居家使用。耐耗性大。  
**成分** 100%Trevira CS。幅宽约59英寸(150cm)。重量约510克/延米。纱染色面料。颜色可能稍有色差。

**图纹方向 ↔**

**马丁代尔法**约80,000转。EN ISO 12947. **光照色牢度** (ISO) 6-7. **起毛起球** (EN ISO) 4. **磨擦色牢度** (ISO) 干燥5、湿4-5. **吸声系数** (EN ISO 354) 0.60/Class C (隔断帘)、0.80/Class B (一般窗帘使用). **气流阻力** 974 Pa s/m. **阻燃性:** AS/NZS 1530.3. AS/NZS 3837 Class 1. ASTM E84 Class A unadhered. BS 5852 Crib 5. DIN 4102 B1. EN 1021-1/2. EN 13501 B, s1, d0. FAR 25.853. IMO FTP Code 2010:Part 7. IMO FTP Code 2010:Part 8. NF D 60 013. NF P 92 507 M1. NFPA 701. SN 198 898 5.2. UNI 9175 11M. UNI 9177 Classe 1. US Cal. Bull. 117-2013. ONORM B1 / Q1. (可提供测试报告副本).  
**维护** 请参照ISO标志。于温度60°C清洗时, 面料缩水率约2%。消毒请参阅kvadrat.dk。



10 year warranty



Quality and environmental system accreditation according to ISO 9001 and ISO 14001.

\* ACT® Registered Certification Marks

\* Abrasion test results exceeding ACT performance guidelines are not an indicator of product lifespan. Multiple factors affect fabric durability and appearance retention.

EU Ecolabel: Encouraging the use of sustainable fibres. Durable and high quality. Hazardous substances restricted.

Contact and further information **kvadrat.dk**

US contact info: 1-800-620-9309